

# Variable Optical Imaging System

## Imaging Projection Lens Assembly

### IMM35S-F50

IMM35S-F50 belongs to the product family of IMM imaging projection lens assembly. It consists of multiple lenses assembled in a aluminum alloy housing. All of the lenses are made of special glass materials using high precision grinding and surface polishing processes, and coated with multiple layers of high-transmittance film, through precise assembly, form a low-dispersion lens with high resolution, offering high-quality imaging. Arranging LED, specific condensing lens set, and IMM35S-F50 lens in group to form an imaging projection system with the characteristics of fixed wide beam angle and short light path. The projected light spots exhibit high clarity, uniform, fullness, and are free from distortion. IMM35S-F50 is particularly well-suited for low to medium power and compact-size LED projection lighting applications.

Applications scope: High-definition LED imaging lights, pattern projection lights, profile cutting lights, profile spotlights, and more.

Application Areas: Stage performances, cultural and tourism landscapes, film and video shooting, commercial photography, museums, art galleries, and more.



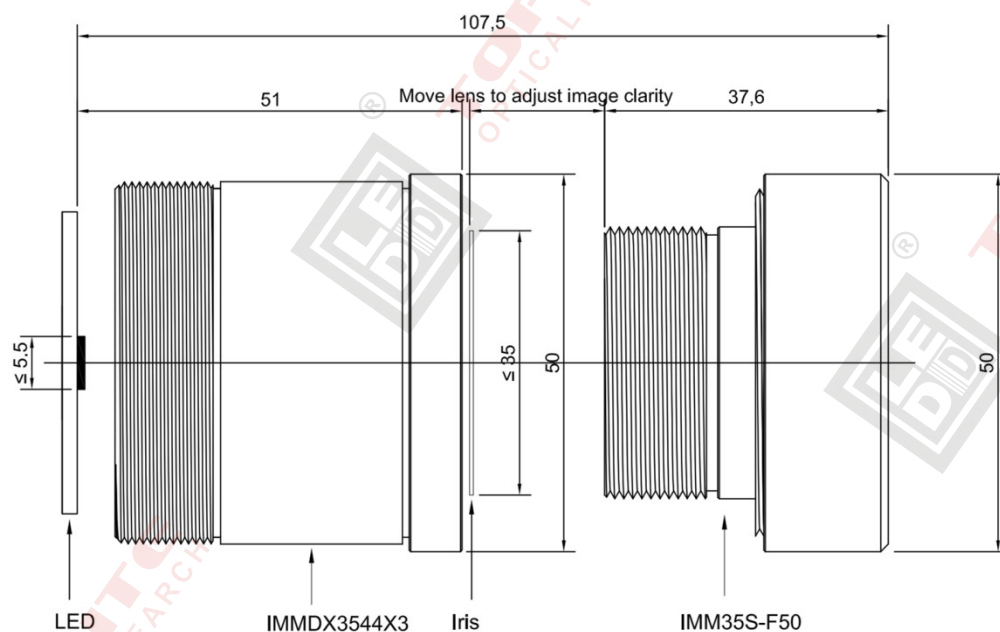
IMM35S-F50 and its specific condensing lens

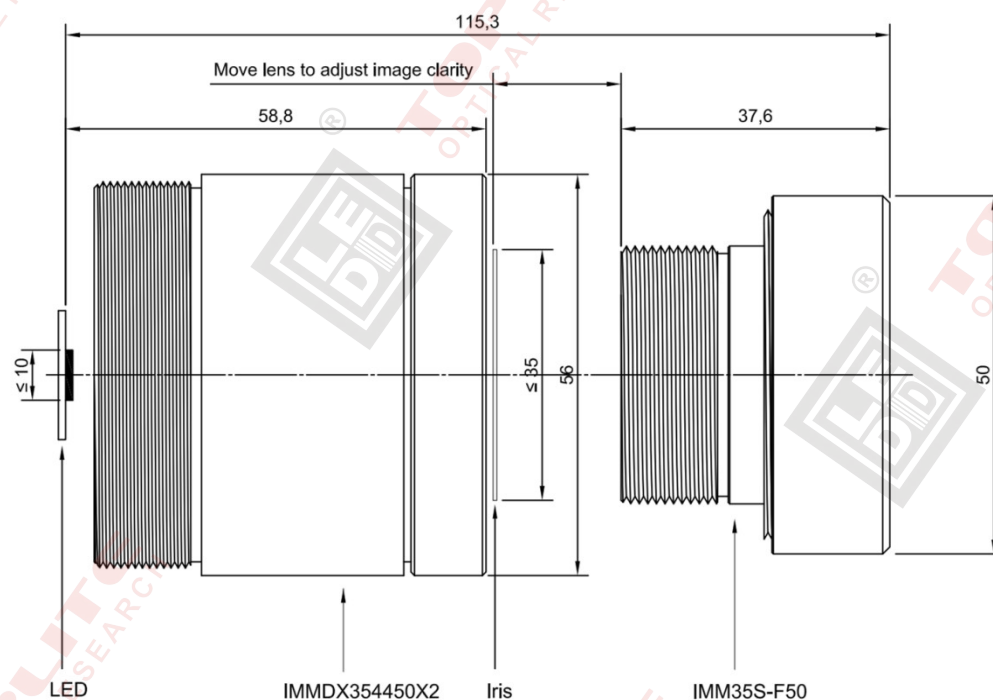
**Main Parameters:**

Product Model	IMM35S-F50D22	IMM35S-F50D28
Product Type	Lens assembly	
LED	High integrated LED or COB, $LES \leq \Phi 10\text{mm}$ , for higher imaging quality $LES \leq \Phi 5.5\text{mm}$ is preferred.	
Condensing Lens	IMMDX3544X3( $LES \leq \Phi 5.5\text{mm}$ ) IMMDX354450X2( $LES \leq \Phi 10\text{mm}$ )	
Gate (Effective Gobo Size)	$\leq \Phi 35\text{mm}$	
Coatings	Multi-layer anti-reflection	
Beam Angle	$50^\circ$	
Length of light path	$\leq 120\text{mm}$	

**Schematic diagram of imaging light path**

There are two typical imaging system schematic diagrams are showed here. Each one consists of four parts, from left to right they are, LED, condensing lens, gate (Gobo), and imaging lens. The gate (effective gobo size) is less than  $\Phi 35\text{mm}$ .





### Ordering Information

Lens model	Lens type
IMM35S-F50	Imaging projection lens
IMMDX3544X3	Condensing lens
IMMDX354450X2	Condensing lens