

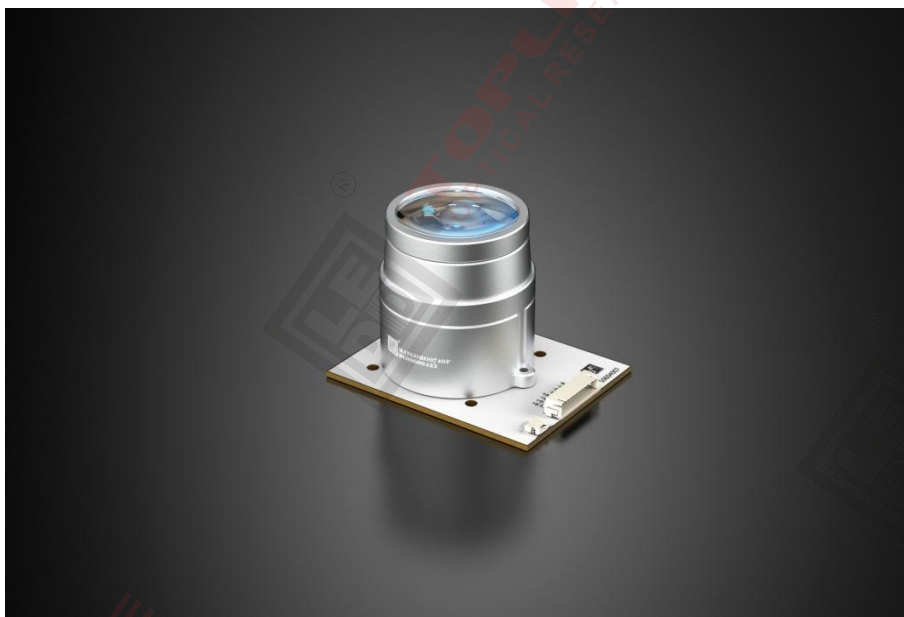
LED Color-mixing Matrix Module

MATGOBO0740

The MATGOBO0740 Series LED Color Mixing Matrix Module features an innovative light-condensing optical design. This design not only focuses the rays from the LED matrix into a smaller area in space but also achieves efficient color mixing, ensuring that the output light, after mixing different colors, is devoid of any color impurities. The LED matrix supports the usage of up to 7 high-power RGBW or other four-in-one LED chips.

Through simple installation, the light-condensing optical lens assembly of the MATGOBO0740 Series can be quickly assembled with the LED matrix to form a complete LED color mixing matrix module. This module boasts ease of use, maintenance, and upgradability.

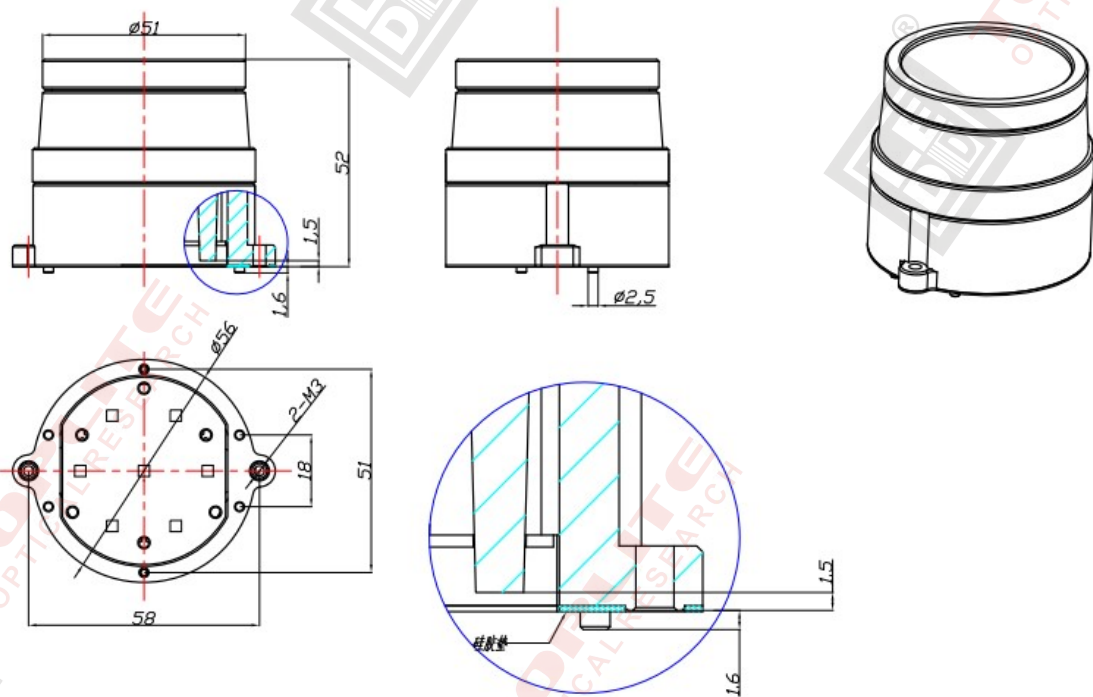
The MATGOBO0740 Series LED Color-mixing Matrix Module is ideal for a wide range of lighting applications, including high-power LED wash lights, long-throw spotlights, profile spotlights, imaging lights, gobo projection lights, LED moving head hybrid lights, and other speciality lighting needs.



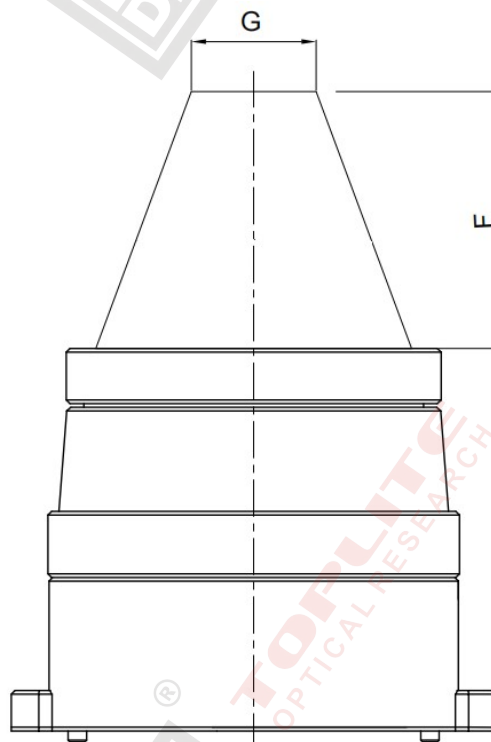
MATGOBO0740 Series LED Color-mixing Matrix Module

- LED required: quantity 7pcs, outer packaging size ≤ 5060 , RGBW or other 4-in-1
- LED power: $\leq 50W$
- LED matrix board: Thermoelectric separation high thermal conductivity copper substrate, thickness $\leq 3.0mm$

- LED Module power range: $\leq 350\text{W}$, equal to the individual power multiplied by the quantity
- Light emission size: $\Phi 43\text{mm}$
- Outline dimension of light-condensing optical lens assembly: refer to the following diagram



- Light pattern: Please refer to the selection list for specific F and G values



- Model selection list and test parameter:

| Model No. | LED | LED qty | Power (W) | Luminous flux(lm) | G(mm) | F(mm) | Beam angle(°) | G shape |
|-----------------|----------|---------|-----------|-------------------|-------|--------|---------------|---------|
| MATGOBO0740B | RGBW 40W | 7 | 280 | 8100 lm | 18mm | 35±2mm | 65° | Octagon |
| MATGOBO0740B-RY | | | | | | | | Octagon |
| MATGOBO0740F | | | | | | | | Square |
| MATGOBO0740F-RY | | | | | | | | Square |

Special Note:

The test data provided in the aforementioned selection list are for reference only. Specific performance data may vary depending on factors such as the chosen LED chip specifications, the manufacturing process of the LED matrix board, the cooling system, and the overall assembly precision. Therefore, please refer to actual conditions for accurate performance figures. This MATGOBO0740 Series LED Color-mixing Matrix Module can be paired with our TOP-GF series of glass Fresnel lenses to create an lighting optical path like spotlight used in film and television; they can also be combined with the IMM series to form a projection imaging optical path. For specific details, please contact us.